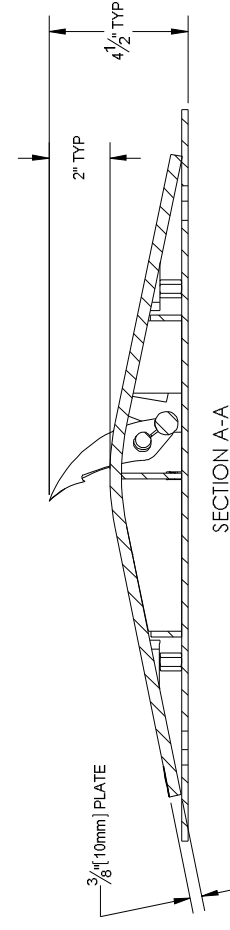
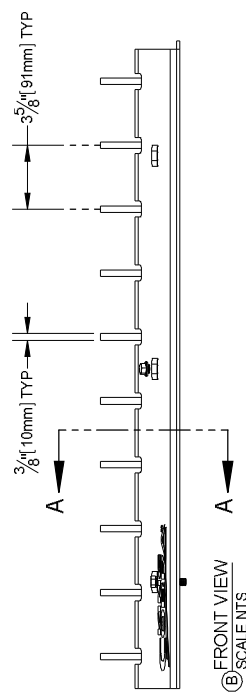
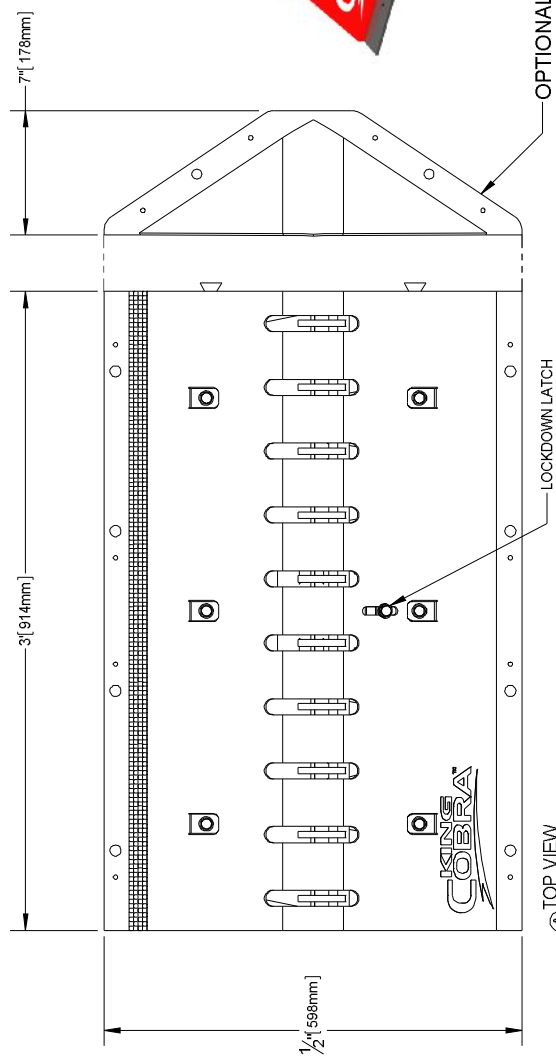
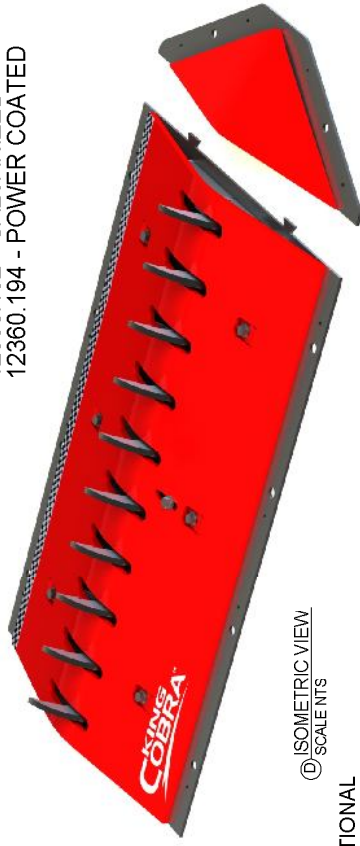


NOTES:
 ALL STEEL CONSTRUCTION
 PART NUMBERS:
 12360.100 - PAINTED
 12360.120 - GALVANIZED
 12360.130 - POWER COATED
 OPTIONAL END BEVELS
 SET OF 2
 PART NUMBERS:
 12360.190 - PAINTED
 12360.192 - GALVANIZED
 12360.194 - POWER COATED



COPYRIGHT © 2013 GUARDIAN TRAFFIC SYSTEMS
 Proprietary Rights are included in all the information disclosed herein. The information is submitted in confidence and neither the document nor the contents thereof are to be reproduced, stored in a retrieval system, or used in any other document, nor shall it be used or disclosed to any person for manufacturing or any other reason except as specifically authorized in writing by Guardian Traffic Systems.

UNLESS OTHERWISE SPECIFIED:
 DIMENSIONS ARE IN INCHES
 FRACTIONAL DIMENSIONS SHALL BE TO THE NEAREST 1/32"
 DIMENSIONS IN PARENTHESES ARE IN MILLIMETERS

MATERIAL	NAME	DATE	SCALE	SCALE	SCALE
N/A	DO NOT SCALE DRAWING		1/1/4/13	N/A	N/A
DRWN	RLS			WEIGHT: N/A	SHEET 1

REV DESCRIPTION
 12360 KING COBRA 3" (914mm) HD SURFACE MOUNT TRAFFIC SECTION

1 2 3 4 5 6 7 8